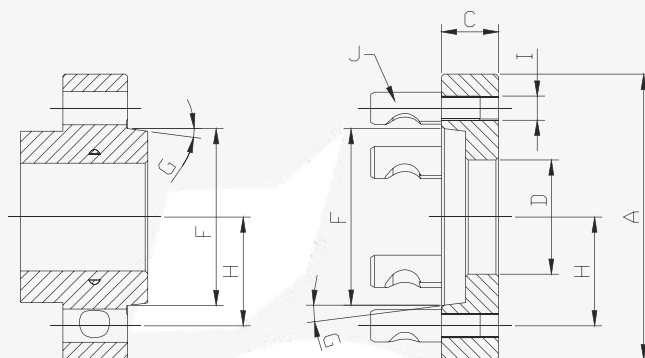




CONE CURTO
(COM PINO TIPO CAMLOCK) - CAMLOCK - ASA B5.9



CONE	CÓDIGO	AØ	C	D	F	G	H	I	J*	Kg
3	160-D3	160	36	40	53,975	7° 7' 30"	35,331	7/16 x 20	3	6
	205-D3	205								6,7
4	160-D4	160	36	40	63,512	7° 7' 30"	41,275	7/16 x 20	3	5,8
	205-D4	205								7
5	205-D5	205	36	50	82,577	7° 7' 30"	52,387	1/2 x 20	6	7,4
6	205-D6	205	36	80	106,375	7° 7' 30"	66,675	5/8 x 18	6	8,5
	255-D6	255	40							12,6
	315-D6	315	45							23,5
	400-D6	400	50							35
8	255-D8	255	40	80	139,713	7° 7' 30"	85,725	3/4 x 16	6	12,9
	315-D8	315	45							24
	400-D8	400	50							37,2
	500-D8	500	50							87
11	315-D11	315	45	100	196,863	7° 7' 30"	117,475	7/8 x 14	6	20,6
	400-D11	400	50							41
	500-D11	500	50							92
15	400-D15	400	50	120	285,762	7° 7' 30"	165,1	1" x 14	6	42,1
	500-D15	500	50							91
	650-D15	650	60							167
	750-D15	750	60							229

* Número de pinos | Kg aproximado